

# Ludlow Reservoir Watershed Management



## ***Guided Forest Walk*** ***Saturday, December 8th, 9 AM***

- Learn about importance of the watershed forest and forest management activities around Ludlow Reservoir
- Learn about impacts of recent gypsy moth infestations
- View upcoming tree harvesting areas
- Ask questions of Commission staff and a Massachusetts Licensed Forester

### **WALK STARTS AT PARKING LOT**

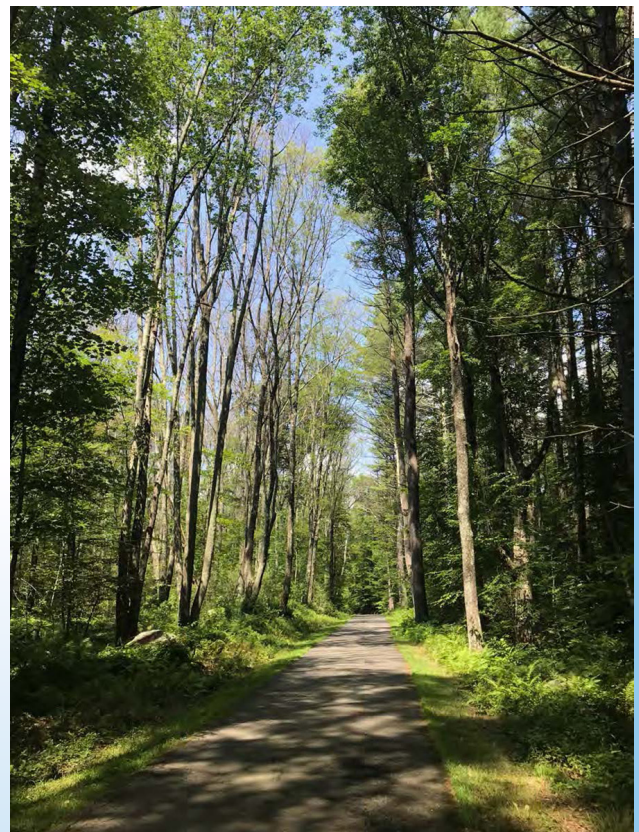
**Meet at the Ludlow Reservoir Parking Lot  
1149 Center Street, Ludlow MA**

**Rain, snow, or shine - dress appropriately!**

**Walk is approximately 2.5 miles**

**For mobility assistance, please call  
413-452-1302 by December 5th**

**WEAR STURDY SHOES**



*Above: Defoliation of oak trees (at left) along the Ludlow Reservoir Recreation Path due to gypsy moth infestation, August 2018.*

### ***For More Information or Questions***

Call Jaimye Bartak - Communications Manager - (413) 452-1302, [jaimye.bartak@waterandsewer.org](mailto:jaimye.bartak@waterandsewer.org)  
<http://waterandsewer.org/ludlow-reservoir-forest-management/>